

JOIN US AT THE **THE BEAV** OF BEAVER CREEK, COLORADO

February 20-27, 2027



A LOOK AT THE BEAV



Beaver Creek Mountain

The central & largest area of the resort, offering the widest mix of terrain. Most trails funnel back to Beaver Creek Village, making it the most convenient & popular part of the mountain.

Grouse Mountain

Is the resort's expert-focused area, featuring steeper pitches, moguls, and tight tree skiing. It's smaller but delivers concentrated, more technical terrain for advanced skiers.

Larkspur Mountain

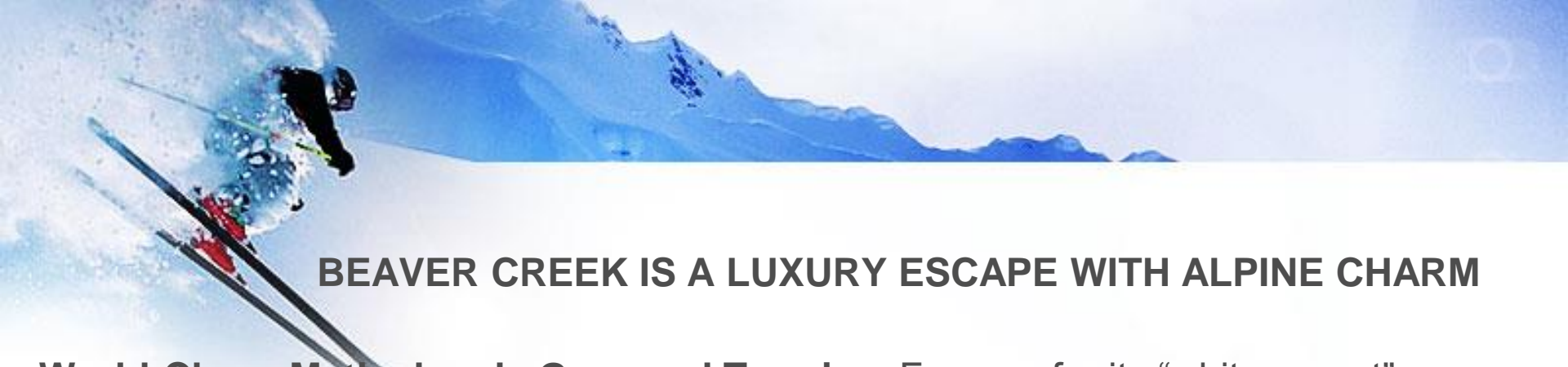
Offers primarily intermediate groomers and few advanced options. Its central location & high-speed lift access make it a favorite for laps and for groups with mixed abilities..

Bachelor Gulch Mountain

Provides scenic intermediate runs and enjoyable glade skiing in a slightly quieter setting. It connects smoothly to the rest of the resort while often feeling less crowded than the main village side.

Arrowhead Mountain

The westernmost & most mellow section of the resort, known for its gentle beginner and lower-intermediate terrain. Its quieter village atmosphere makes it ideal for relaxed skiing days.



BEAVER CREEK IS A LUXURY ESCAPE WITH ALPINE CHARM

World-Class, Meticulously Groomed Terrain – Famous for its “white carpet” corduroy and impeccably maintained runs, plus the legendary Birds of Prey World Cup downhill course for those who want serious challenge.

Variety for Every Ability Level – From gentle beginner slopes at Arrowhead to expert steeps and glades on Grouse Mountain, the resort offers balanced terrain across five interconnected mountains.

Luxury Without the Attitude – Upscale lodging, ski valets, heated walkways, and an elevated dining scene create a refined but relaxed mountain experience.

Short Lift Lines & Seamless Flow – High-speed lifts and smart mountain design to keep skiers moving rather than standing in line, even during busy periods.

Charming European-Style Village Atmosphere – Beaver Creek Village delivers a cozy alpine feel with après-ski options, outdoor ice skating, family-friendly events, and the resort’s signature warm cookie service each afternoon.

Polished, Crowd-Light Experience – Compared to neighboring mega-resorts, they offer a more refined, attentive guest services, less chaotic ski day with spacious slopes, and a noticeably relaxed on-mountain atmosphere.



THE CHARTER RESORT

The Charter is a perfect blend of slope-side convenience, wellness and relaxation amenities, and cozy mountain-style residences just steps from world-class skiing.

- Ski-in/ski-out or short walk access to the slopes (depending on building we're in)
- Heated Indoor Pool and 3 Hot Tubs
(Drinks allowed, no glass)
- On Site Dining & Bar, Full-Service Ski Shop & Rentals
- Full-Service Spa & Wellness Center
- Complimentary Ski Lockers
- Convenient shuttle service to nearby Beaver Creek & Bachelor Gulch areas and Beaver Creek Village
- Entertainment: Game Room, Fire Pit and complimentary WiFi in every room.



THE CHARTER CONDO ACCOMMODATIONS

Two Bedroom Condos

- King Bed & 2 Queen Beds
- Private Bathrooms
- Fully Equipped Kitchen
- Fireplace
- Private balcony or patio
- High Speed WiFi (bring your Firestick etc)
- Washer & Dryer in each Unit
- Complimentary Coffee
- Dining Room and Living Room areas



EXCELLENT NON-SKIING ACTIVITIES



Snowshoeing

Free Nature walks, back country snowshoe hike with the naturalists, or join Walking Mountains Science Center for a half-day backcountry hike.



Winter Fishing

See winter from a completely different perspective with a specially build for you fishing trips. But don't be fooled rivers are still full of live and fishing in the winter months is just as fun.



Dog Sledding

Mountain Musher Dog Sled Rides invites you to join them for a sledding adventure on their trails located on private land.

Snowmobiling

It's no surprise that snowmobile riding is so popular as a way to see more of the high alpine winter scenery or as a way to satisfy your need for speed.



Sleigh Rides

Relax to the sound of sleigh bells jiggling and horses prancing through snow as sip hot drinks snuggled under a cozy blanket.

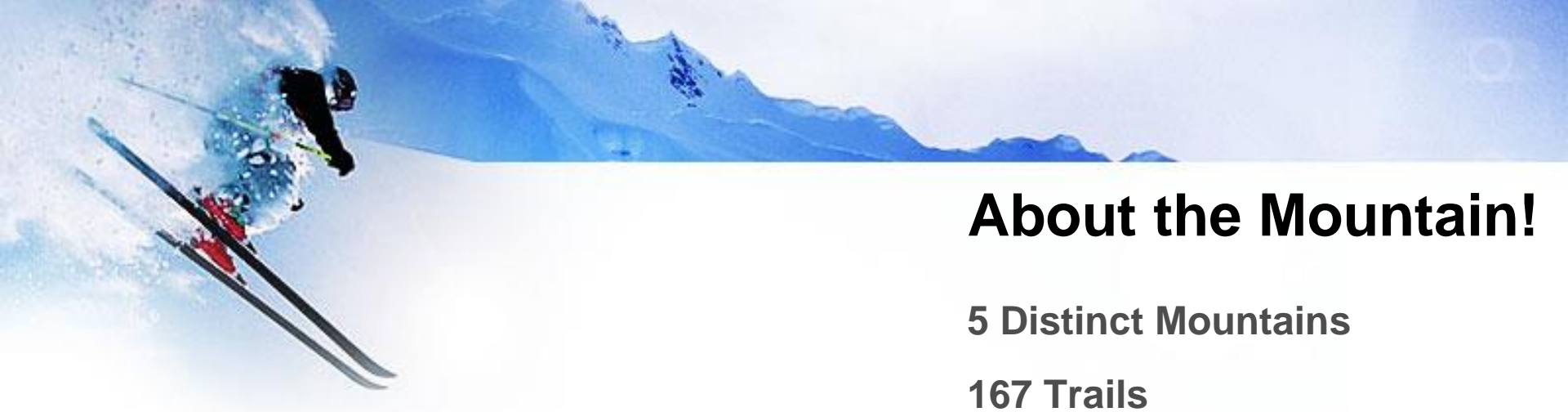


Snow Tubing & Ice Skating

Are available around Beaver Creek Village



Even Cultural Events at the Vilar Performing Arts Center.



About the Mountain!

5 Distinct Mountains

167 Trails

2,082 Skiable Acres

11,440 Ft Elevation at Summit

8100 Ft Base

24 Lifts including:

2 Gondola

1 Condola

12 High Speed Quads

1 Standard Quad

1 Triple

1 Double

6 Magic Carpets

Terrain:

28% Beginner

38% Intermediate

34% Advanced / Expert



About Beaver Creek Village!



- A pedestrian-friendly, European-inspired village with heated sidewalks and covered walkways.
- Scenic winter charm in ski season with twinkling lights, fire pits, ice skating, and festive music (even in Winter).
- Outdoor ice skating right in the village core.
- Beaver Creek Wonder art installations and seasonal outdoor experiences for memorable photo ops.
- A broad range of boutiques, luxury retailers, art galleries, and specialty shops
- Free town and resort shuttles.
- Ski directly into town.
- Excellent Apres-Ski options.
- Fresh hot cookies daily at 3pm!



These are the Trippers who've already signed up!

(If you shouldn't be on this list or think you should be (but aren't) – please contact Jeff)

| | |
|----------------|-----------------|
| Judi Laurento | Mary Dreblow |
| Karen Lambert | Tom Winslow |
| Karen Bolla | Linda Sherrod |
| Jim Bernard | Nick Puiia |
| Judy McNiece | Lawrence Eby |
| Jeff McNiece | Paula Eby |
| Richard Warren | Lawrence Tironi |
| Jane Motley | Loretta Lewis |
| Ben Foster | Barbara Shelor |
| Marleen Foster | Theresa Gates |
| Scott Berge | Ken Gates |
| Chris Stoker | |
| | |

COST Estimate

(hopefully estimated on the high side)

Beaver Creek, Colorado, February 20-27, 2027

~\$3199

Accommodations at The Chapter

2 Bedroom Condo w/ king bedroom & 2 queens in the second bedroom.

Occupancy: 4 (2 couples or a couple with 2 singles).



Costs details

- Estimated prices are per person with minimum double occupancy.
- There are still multiple open costs, which simply aren't available yet.
- We've tried to estimated everything on the high side just in case.

What's included in this price:

- Airfare
- Bus transportation to/from MCO and destination
- Hotel Lodging
- Pre/Post Trip get-together
- Welcome and Pizza Party
- Group Dinner
- Apres-Ski
- Trip Gift

What's not included in this price:

- Trip Insurance (highly recommended)
- Lift Tickets (EPIC or local passes recommended)
- Equipment Rentals
- Groceries, liquor and drugs



EPIC Pass Prices

EPIC – 2026-2027

EPIC – 2026-2027

- **Are on sale NOW!**
- Breckenridge, Beaver Creek and Whistler trips are all available on the Local Pass and not on peak days.

Local Pass restriction is no more than 10 days total between Beaver Creek and Whistler. Unlimited at Breckenridge

- Prices often increase around
 - ✓ late May or early June
 - ✓ Summer (June–August)
 - ✓ Early Fall (September / Labor Day)
 - ✓ Mid-October
 - ✓ Mid-November (Final Deadline)

- Full Pass - \$1150
- Local Pass - \$809
- Military Pricing - \$215 (Retired & Dependents), \$620 (Veterans) – Valid for all 3 trips
- Multi-Day Passes (All Resorts / No Peak Dates)
 - ✓ 5 Day - \$527
 - ✓ 4 Day - \$451
 - ✓ 3 Day - \$362
 - ✓ 2 Day - \$256
 - ✓ 1 Day - \$138

Please support our club by purchasing your EPIC and IKON passes from: <https://www.ski.com/season-passes?ls=12083>
Link is also on the website under TRIPS Tab.

How to Register for a Trip

First – you need to be an active member with dues paid!

If you are NOT an active VSC Club member yet, you will need to join/renew and pay the club dues first (\$25pp).

- Trips have been open since the January Club Meeting (emails sent to all members).
- To reserve a trip, you must first register online at our club website: www.TheVillagersSkiClub.com (it spells The Villagers Ski Club)
- After registering, Simply logon, and select the TRIP APPLICATION tab, see example to the right.



- Then select the trip that you want to go on from the dropdown, and complete/submit the reservation form. Please make sure that you look at all fields.
- You'll get a confirmation email (if you don't see it, check your Spam/Junk folders and add our email to a Contact to prevent it from happening again).
- You will need to mail in a deposit check for \$500 (made out to "THE SNOW SKIING VILLAGERS") and mail it to

Mike Roling, 2167 Westchester Way, The Villages, FL 32162

- You're not confirmed until the deposit is received.
- If you have issues: Please contact **Mike Sadof** @ mgs@mgsnet.net or **(301)-613-3987**